

Kanazawa Craft Tourism

A Trip to Kanazawa, Creative City of Crafts



Kanazawa is situated in the center of the main island of Japan. The city was governed by 14 generations of the Maeda clan over 280 years. Kanazawa boasts Kenrokuen Garden, one of the most beautiful gardens in the country, as well as streets lined with historical buildings. In addition, various traditional craft techniques have been handed down through the generations, and new creative activities have also been promoted.



**Kanazawa
Craft Tourism**

Kanazawa Craft Tourism

“Craft tourism” is our name for a trip that features experiencing traditional crafts and performing arts. Why not try some craft tourism when you visit Kanazawa?

City of Crafts

Kanazawa has a wide variety of traditional crafts including Kanazawa gold leaf, Kaga-yuzen dyed silk, Kutani ceramics and Kanazawa lacquerware. In addition, new creative activities such as glass art have been promoted. The city of Kanazawa was registered as a City of Crafts of UNESCO's Creative Cities Network in June 2009.



United Nations
Educational, Scientific and
Cultural Organization



Member of the
UNESCO Creative Cities
Network since 2009

Major Crafts

Kanazawa Gold Leaf

Gold leaf is made by pounding gold to make it into a sheet with a thickness of 0.2 micron. 99% of Japanese gold leaf is produced in Kanazawa.



Kaga-yuzen Dyed Silk

Kaga-yuzen silk kimonos are produced by means of a complicated processes. The silk features realistic designs of flowers and birds.



Kutani Ceramics

This ceramic ware features flowers and birds with seasonal elements applied in five distinctive Kutani colors.



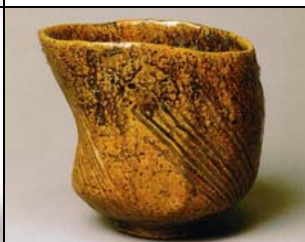
Kanazawa Lacquerware

This lacquerware is characterized by designs using gold and silver powder and seashells.



Other Crafts

Kaga embroidery(left), Ohi-yaki pottery(center), Kaga inlay(right), etc.



1. Model Course

■ Plan 1

Higashi *chaya* area (historical amusement quarter) + Experience of gold leaf application → Omicho Market (lunch) → Kaga Yuzen Traditional Industry Center + Experience of putting on a kimono → Strolling in a kimono + Tea ceremony at “Gyokusen-en”, the Nishida family garden

【Photo】 Nishida family garden: Gyokusen-en



■ Plan 2

Kenrokuen Garden / Kanazawa Castle Park → 21st Century Museum of Contemporary Art, Kanazawa → Craft Hirosaka → Nagamachi samurai residential area + Nagamachi Yuzen Kan, Kanazawa Kutani Museum (Kaburaki)

【Photo】 Illuminated Kenrokuen garden



2. Facilities Related to Traditional Crafts

(The number indicates the location on the map.)

No	Facility	Opening Hours / Closed days / Admission	Description
1	Ishikawa Prefectural Museum of Traditional Arts and crafts 1-1 Kenroku-machi Tel: 076-262-2020 Fax: 076-262-8690	Open: 9:00am~5:00pm Closed: 3rd Thursday during Apr-Nov, Every Thursday during Dec-March, Year-end and New Year's holidays Admission: 250 yen	36 traditional crafts of Ishikawa, such as Kaga-yuzen, Kutani ceramics, and Wajima lacquerware, as well as crafts produced by contemporary local artists, are on exhibit.
2	Kanazawa Crafts Hirosaka 1-2-25 Hirosaka Tel: 076-265-3320 Fax: 076-265-3321	Open: 10:00am~6:00pm Closed: Year-end and New Year's holidays, Mondays Admission: Free	An antenna shop selling rare traditional crafts of Kanazawa, such as Kaga inlay, Kaga embroidery, Kaga fishing flies and Kanazawa Japanese-style umbrellas
3	Kanazawa Noh Museum 1-2-25 Hirosaka Tel: 076-220-2790 Fax: 076-220-2791	Open: 10:00am~5:00pm Closed: Mondays, 12/29~1/3 Admission: 300 yen	An explanation of Noh theater is given on the Noh stage, and there is an exhibit of Noh masks and costumes.
4	Utatsuyama Craft Workshop To-10 Utatsu-machi Tel: 076-251-7286 Fax: 076-251-9113	Open: 9:00am~5:00pm Closed: Year-end and New Year's holidays, Tuesdays Admission: 300 yen	Works of local craft artists are on exhibit, and visitors can observe ceramics, lacquerware, dyeing, metalwork, and glass workshops.
5	Ohi Museum 2-17 Hashibacho Tel: 076-221-2397 Fax: 076-221-2123	Open: 9:00am~5:00pm Closed: Open every day Admission: 700 yen	Museum of ceramic works for the tea ceremony which have been produced for 340 years. (Free admission to the gallery)
6	Kaga Yuzen Traditional Industry Center 8-8 Kosho-machi Tel: 076-224-5511 Fax: 076-224-5533	Open: 9:00am~5:00pm Closed: Year-end and New Year's holidays, Wednesdays Admission: 300 yen *When you experience kimono wearing and/or Yuzen dyeing, admission is free.	Exhibition of Kaga-yuzen kimonos, presentation of the Kaga-yuzen silk-dyeing process, and observation of the drawing process Putting on a kimono (20 min: 2,000 yen), stroll in a kimono (60 min: 4,500 yen), Stamp dyeing (20 min: 1,575 yen), Hand-drawing dyeing (60 min: 2,625 yen)
7	Ishikawa Kanko Bussan-kan (Local Products Shop) 2-20 Kenroku-machi Tel: 076-222-7788 Fax: 076-222-5183	Open: 10:00am~6:00pm Closed: Tuesdays Admission: Free	Local crafts and sweets are for sale here. Visitors can also experience designing a handcrafted doll called Kaga-hachiman Okiagari (30 min: 1,000 yen) (11:00am~3:00pm)

※Other Craft Facilities (for making crafts, etc.)

No	Facility	Opening Hours / Closed days / Admission	Description
8	Imai Kinpaku Tel: 076-223-8989	9:30am~6:00pm Closed: Wednesdays, Year-end and New Year's holidays	Experience of placing gold leaf (60 min~: 630 yen~)
9	Sakuda Gold & Silver Leaf Tel: 076-251-6777	9:00am~6:00pm Open every day	Experience of placing gold leaf (60 min: 600 yen~)
10	Kanazawa Katani Tel: 076-231-1566	9:00am~5:00pm Closed: Year-end and New Year's holidays	Experience of placing gold leaf (40 min: 900 yen~)
11	Gold Leaf Craft Tajima Tel: 076-263-0221	10:00am~5:30pm Closed: Tuesdays, Year-end and New Year's holidays	Experience of placing gold leaf (40 min: 1,000 yen) *Weekdays only, Reservation required
12	Hakuichi Hakuko-kan Tel: 076-240-8911	9:00am~6:00pm Closed: Jan.1	Experience of placing gold leaf (30 min~60 min: 800 yen~2,000 yen) Experience of trimming gold leaf (10 min: 500 yen)
13	Hakuza Keikodokoro Tel: 076-252-3641	10:00am~5:00pm Closed: Sundays, Mondays, National holidays	Experience of placing gold leaf (15 min~: 600 yen~2,000 yen)
14	Nagamachi Yuzen-kan Tel: 076-264-2811	9:00am~5:00pm Closed: Year-end and New Year's holidays	Putting on a kimono (20 min: 1,000 yen), Stroll in a kimono (4,000 yen/day), Hand-drawing (60 min~: 4,000 yen)
15	Choju Kutani Pottery Shop Tel: 076-221-1822	10:00am~5:00pm Closed: Wednesdays, 1st & 3rd Tuesday	Creation of original works (60 min: 1,050 yen ~3,360 yen) Your fired work will be sent to your address one month later.
16	Kutani Kosen Kiln Tel: 076-241-0902	9:00am~5:00pm Closed: Jan.1	Observation of the traditional pottery production process Experience of decorating a piece of pottery (60 min: 1,050 yen~) Your fired work will be sent to your address two months later.
17	Kanazawa Kutani Museum (Kaburaki) Tel: 076-221-6666	9:00am~10:00pm (~18:00 on Sundays and National holidays)	Antique Kutani ceramics produced for export 100 or more years ago are on exhibit here.
18	Nosaku Tel: 076-263-8121	10:00am~7:00pm Closed: Wednesdays, Year-end and New Year's holidays	Experience of designing lacquerware (90 min: 3,150 yen) *Reservation required by the previous day
19	Gallery Kyoka Tel: 076-232-2770	10:00am~5:00pm No fixed closing days	Experience of designing lacquerware (90 min: 1,000 yen) http://www.kk-makie.com/
20	Nakashima Menya Tel: 076-232-1818	9:00am~6:00pm Closed: Tuesdays	Experience of designing a handcrafted doll called Kaga-hachiman Okiagari (30 min: 400 yen)

Please post a review of your trip to Kanazawa on Tripadvisor.

<http://www.tripadvisor.com>



[Inquiries]

- ◆ Kanazawa City Tourism Promotion Section
1-1-1 Hirosaka
Tel.076-220-2194 Fax.076-260-7191
- ◆ Kanazawa City Tourism Association
1-1 Kinoshinbo-machi
Tel.076-232-5555 Fax.076-232-1170
- ◆ Kanazawa Machinaka Tourism Salon
2-2-5 Katamachi (Labbro 3F)
Tel.076-225-8460 Fax.076-225-8461
- ◆ Ishikawa/Kanazawa Tourist Information Center
1-1 Kinoshinbo-machi
Tel.076-232-3933 Fax.076-225-7210

